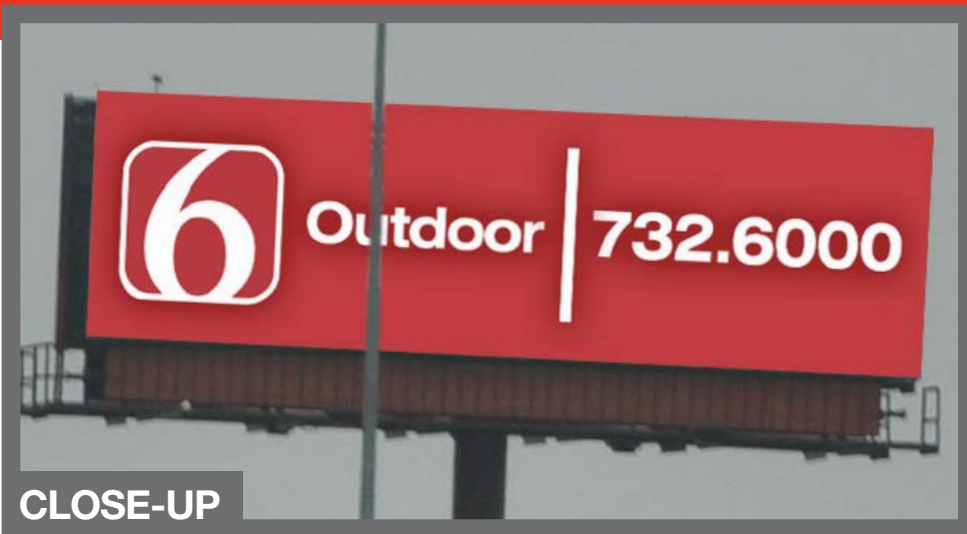




Outdoor

# News 6 Outdoor Digital

News 6 Outdoor • 303 N. Boston Ave., Tulsa, OK 74103 • 918.732.6000



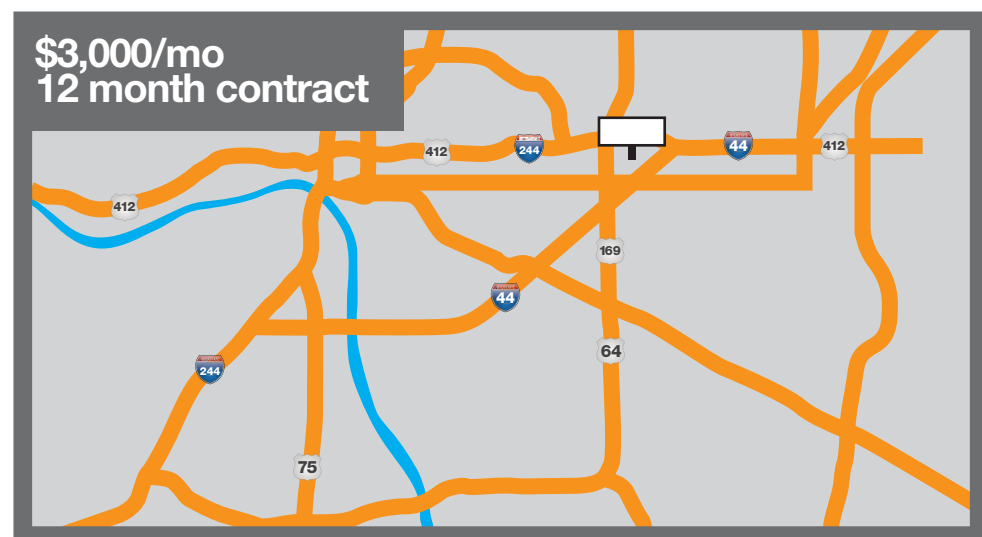
CLOSE-UP



APPROACH

## I-44 & I-244

- North side of I-44 and South of I-244 facing North
- 8 second dwell time
- 1350 spots a day
- 40,500 spots per month
- 7 flips with one additional dedicated to relevant content driving board awareness (News On 6 feed)
- Daily traffic count – 56,900
- DEC – Daily Effective Circulation 36,985
- Flexibility – Start with minimum (3) pieces of art-day part scheduling for time sensitive issues
- 14' & 48' Bulletin
- Panel #950

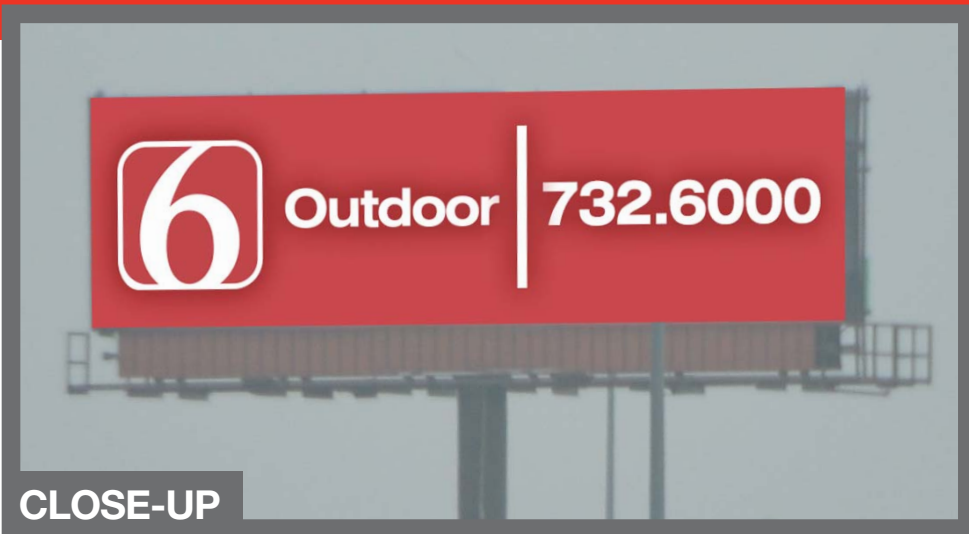




Outdoor

# News 6 Outdoor Digital

News 6 Outdoor • 303 N. Boston Ave., Tulsa, OK 74103 • 918.732.6000



## I-44 & I-244

- North side of I-44 and South of I-244 facing South
- 8 second dwell time
- 1350 spots a day
- 40,500 spots per month
- 7 flips with one additional dedicated to relevant content driving board awareness (News On 6 feed)
- Daily traffic count – 56,900
- DEC – Daily Effective Circulation 36,985
- Flexibility – Start with minimum (3) pieces of art-day part scheduling for time sensitive issues
- 14' & 48' Bulletin
- Panel #951

